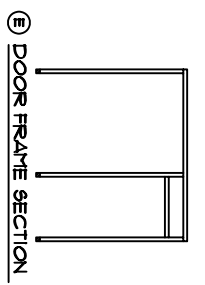
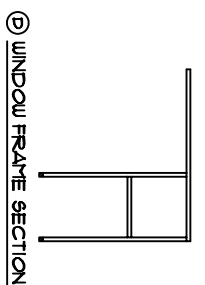


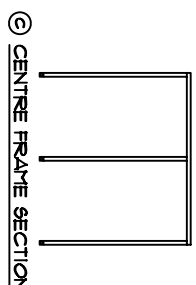
EL SALVADOR HOUSE 2012



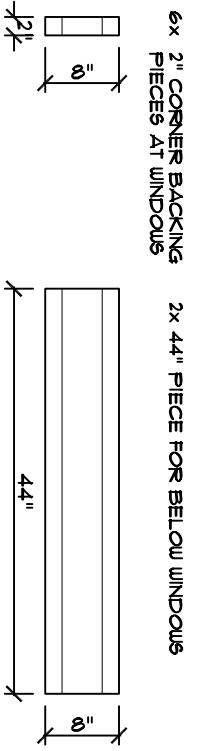
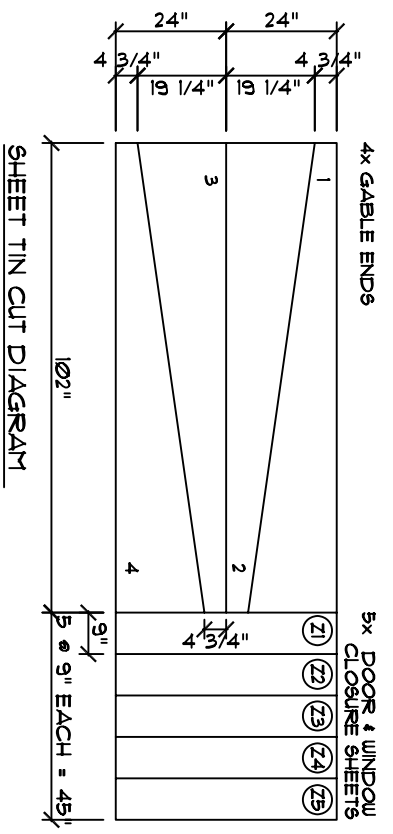
- E 2x DOOR FRAME SECTIONS
- E 3x WINDOW FRAME SECTIONS
- C 1x CENTRE FRAME
- A 3x LONG POSTS
- B 3x SHORT POSTS
- E 3x TRUSSES
- G 8x PURLINS



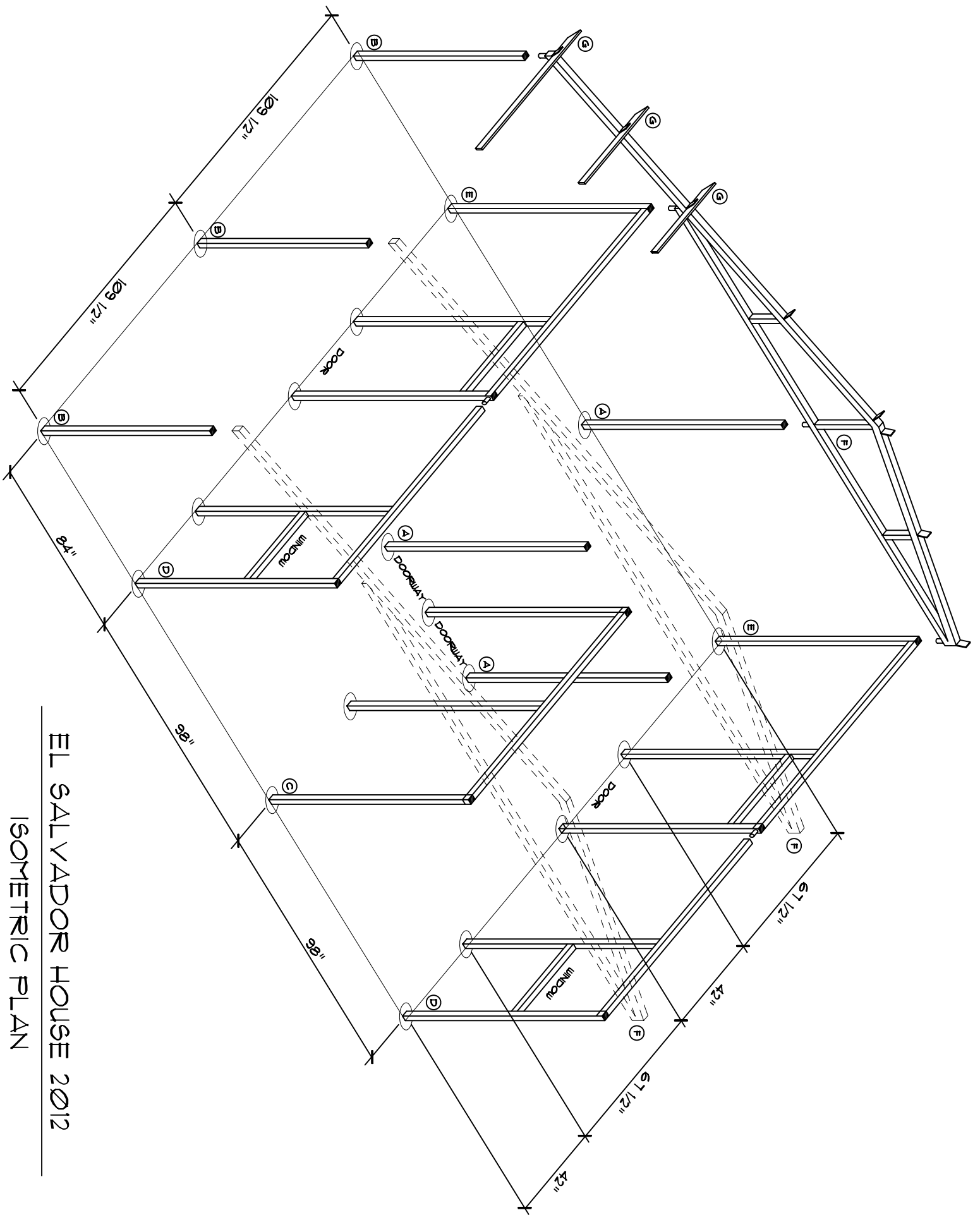
- 4x 2 1/2" CORNER BRACKETS - TO JOIN (A) TO (F)
- 4x 198" SIDE SHEETS
- 4x 111" FRONTS & PARTITION SHEETS
- 10x 6 1/2" FRONTS & BEDROOMS SHEETS
- 6x 108" ROOF SHEETS - CUT 1 - 34 1/2" WIDE *
- 6x 190" ROOF SHEETS - CUT 1 - 34 1/2" WIDE *
- 3x 3/8"x3/8" TUBE WINDOW AND DOOR STOPS
- 2x DOORS / LOCKS / HINGES
- 2x WINDOWS / LOCKS / HINGES
- 3x ROOF VENT CAPS
- 18x CORNER TRIMS
- 1x BAG SCREWS - 5/16" NUT DRIVER & 1/8" DRILL BIT
- 1x SHEET TIN ROLL



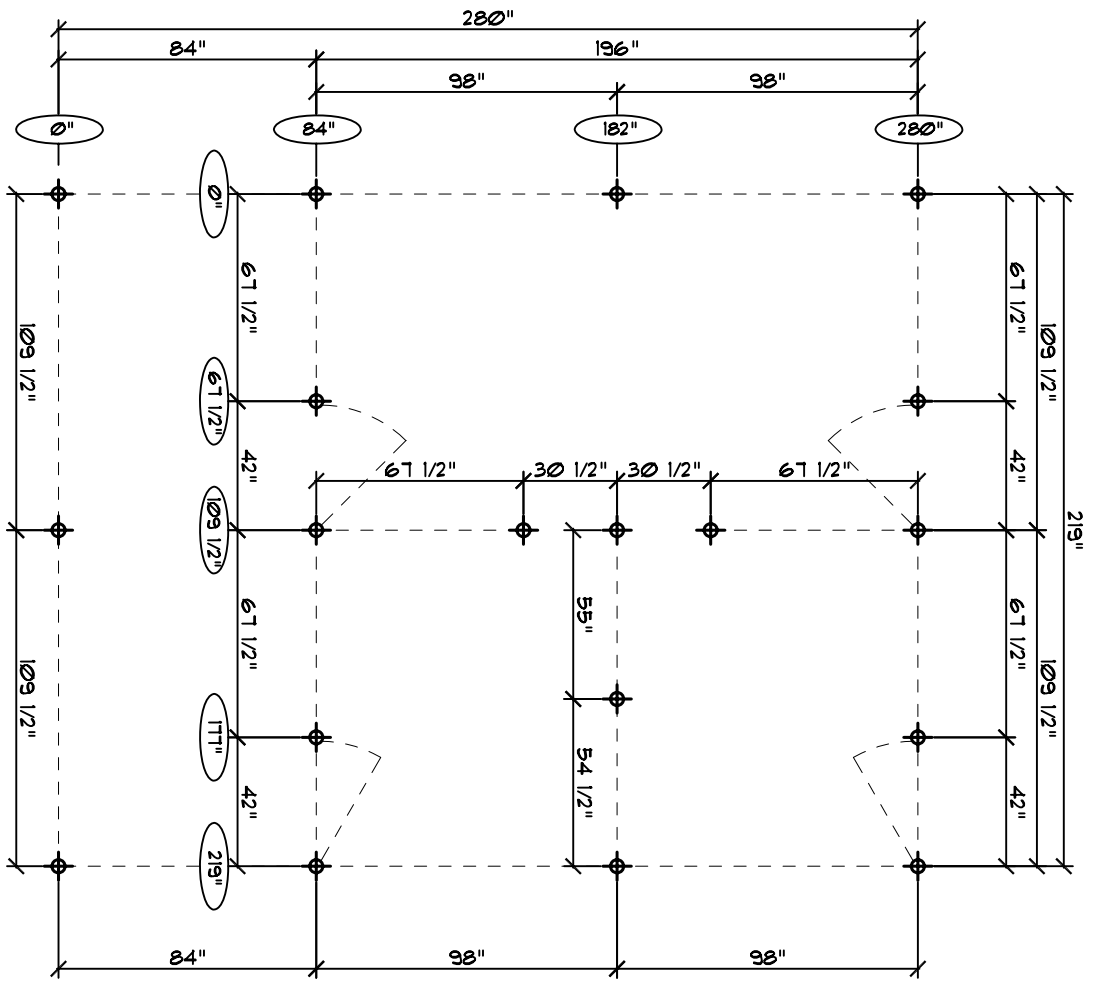
- STOPS - CUT:
 - 4x 19"
 - 4x 33 3/8"
 - 6x 38 3/8"



CORRUGATED METAL BELOW WINDOWS & CORNER BACKING
 * (CUT FROM LEFTOVER ROOF SHEETS)

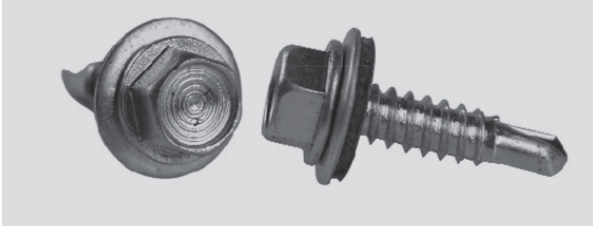


EL SALVADOR HOUSE 2012
 ISOMETRIC PLAN



EL SALVADOR HOUSE 2012
 PINNING HOLE LOCATIONS

fastener usage list



1" screws

for screwing tin (laminate) to metal posts



stitch screws - 3/4" screws (tapered)

only used for laminate to laminate (ie. roof cap, window trim, etc)



2" screws

used for door lock receivers



3/4" small screws (bugle head)

used on window & door stops



1/2" tiny screws (button head)

used for laminate to laminate around perimeter of wall on overlap, window latch, bottom of gable sheeting



rivets

used on door lock receiver if needed to hold it tight to post.